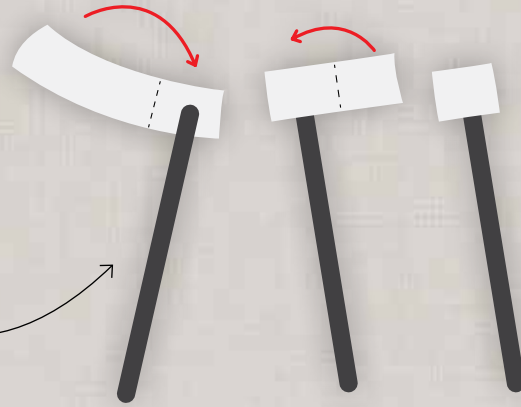


Now make the hinged attachments to fix the sticks to the puppets. These will allow the sticks to be held at an angle to the puppets, so that the sticks and puppeteers' hands will not show on the screen.

**5**

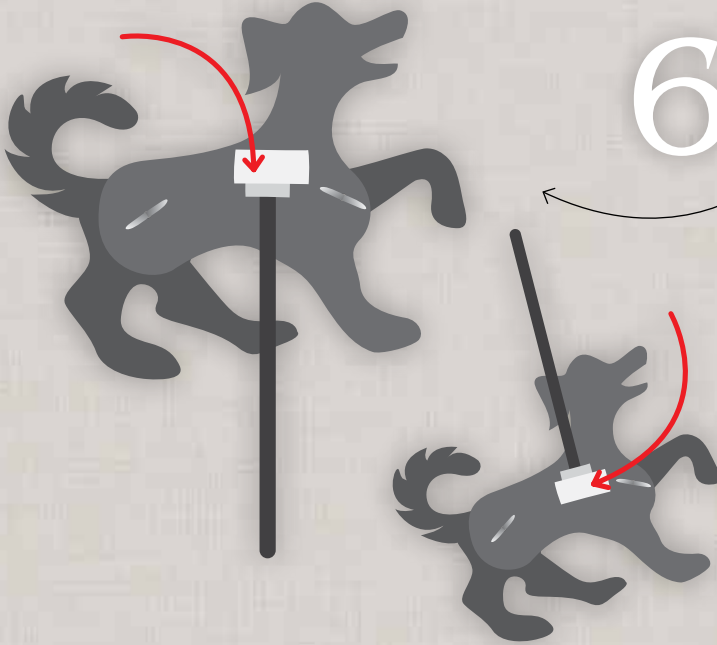
First stick a 10cm length of masking tape to the end of each stick, extending past the end and the sides, fold over a few times then flatten the tape to make a small spade-like end on the stick.



**6**

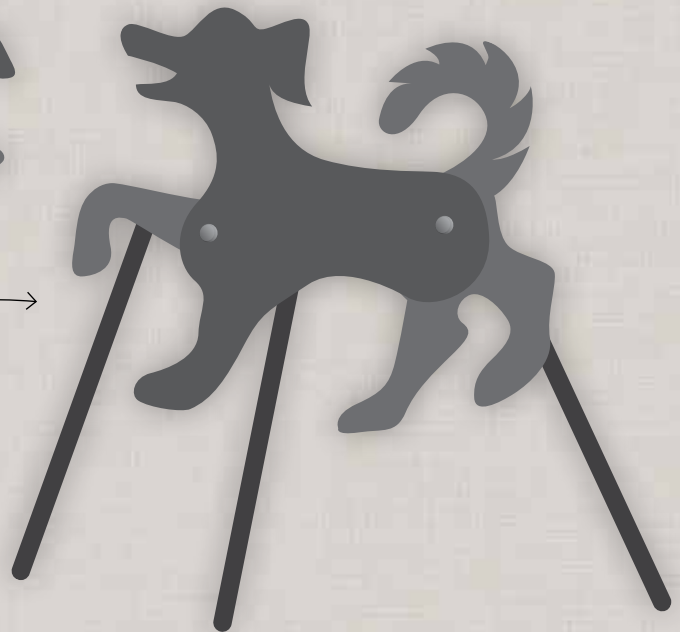
With a shorter piece of tape, stick the tape 'spade' (not the stick) to the back of the body of the puppet. Flip the stick upwards, and stick the underside of the 'spade' to the puppet as well. This creates a hinged handle.

Trim off any tape that shows from the front of the puppet.



**7**

Repeat the process for all the moving parts of the puppet, so each piece has its own hinged handle attached.



**8**

Use a lamp to shine on a light coloured cloth or wax paper screen.

Practise moving your puppets in front of the light to make the shadows move. Use the sticks to hold the puppets up close to the screen whilst your hands are further back. This will ensure they do not show up on the screen.

